

LH 425

**Underground
Loaders**



LH 425

TALPA MACHINES ARE BUILT TO WORK UNDER TOUGH MINING APPLICATIONS.

Talpa LH425 is a diesel powered loader for large scale tunneling and mining applications. The powerful four wheel drive articulated chassis ensures high safety and efficiency in underground.

Talpa LH425 is easy to use with state of art driveline and ergonomic ROPS-FOPS certified canopy providing the lowest cost of operation.

TECHNICAL SPECIFICATIONS TALPA LH-425

CAPACITIES

Net Weight	28.960 kg
Bucket Capacity	4 m ³ – 10.000 kg

DRIVING SPEEDS)

1st Gear	4,5 km/h
2nd Gear	8.3 km/h
3rd Gear	13,9 km/h
4. Speeds	24,5 km/h*

* OEM blocks the 4th gear in order to protect against misuse

DRIVELINE

Transmission - Torque	Dana Powershift - Dana
Speeds	4 forward / 4 reverse
Front and Rear Axles	Kessler
Degree of Axle Oscillation	+/- 8°
Brake	SAHR

ENGINE

Tier IIIA Common Rail Diesel

Option 1

Mercedes 220kW@2200 rpm

Option 2

Volvo 210kW @2200 rpm

Number of Cylinders

6

Cooling System

Water

CYCLE TIMES

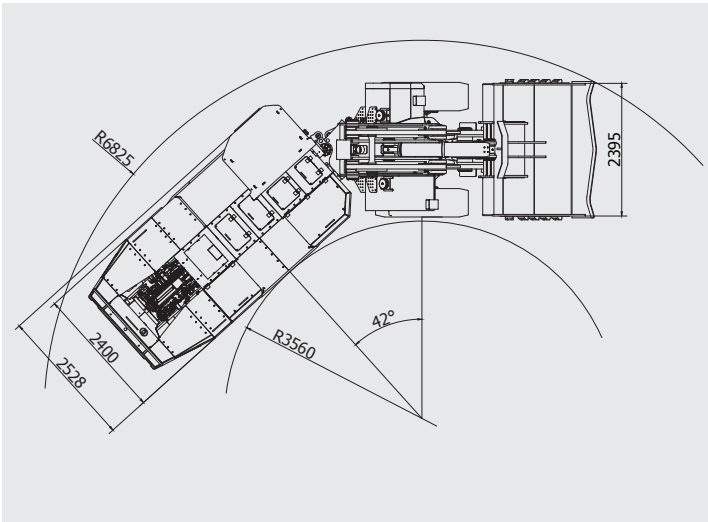
Raising	7,24 sec.
Lowering	4,95 sec.
Tipping	3,18 sec.

OTHERS

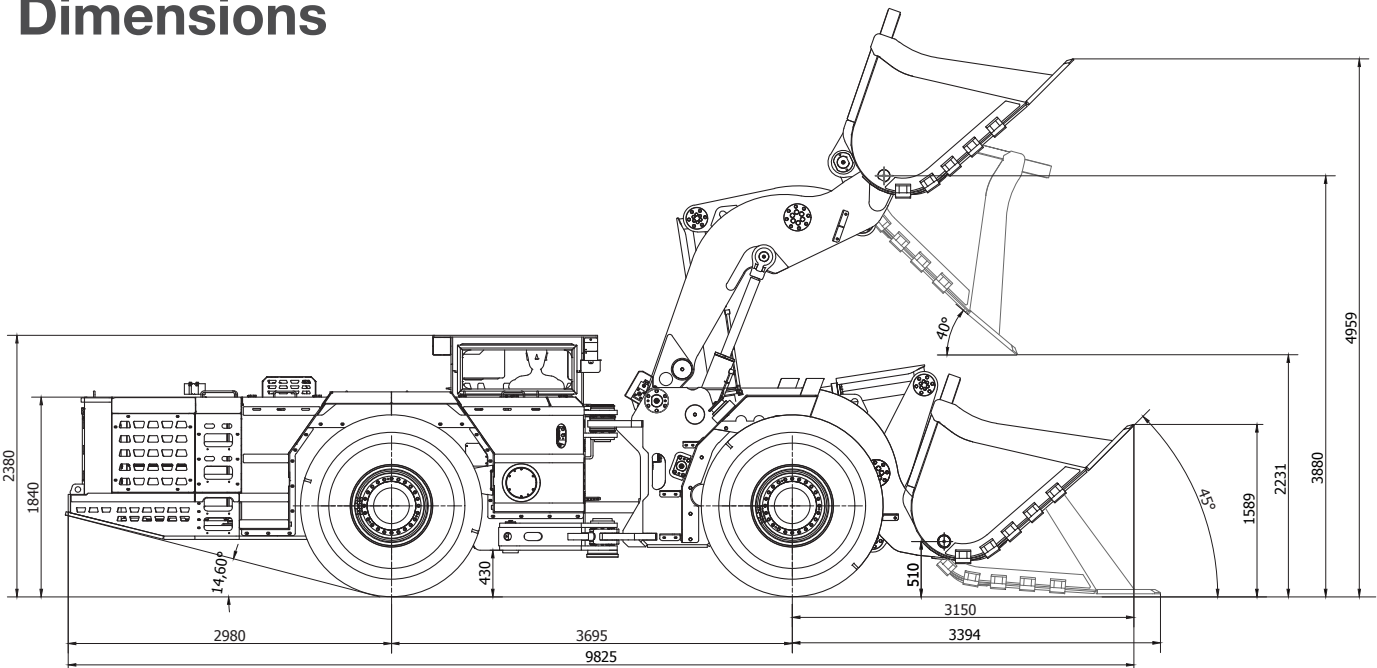
Tyre Size	18.00R25
Battery	2 x 12 V 135 A
Lights (LED)	4 Front, 2 Rear, 1 Side
ROPS/FOPS Certified Safety Canopy	
Manual Lubrication System	
Fuel Tank Capacity	390 L
Rear View Camera Display in Operator Cabin	
Closed Cabin with A/C & Heating	

HYDRAULIC SYSTEM

Heavy Duty Gear Type Pumps



Dimensions



Contact Us

Talpa Machinery Industry and Commerce Inc.
10013 Sokak No: 8 AOSB Çiğli - İzmir - TURKEY
Tel: 0090 232 503 40 50 - talpa@talpamining.com